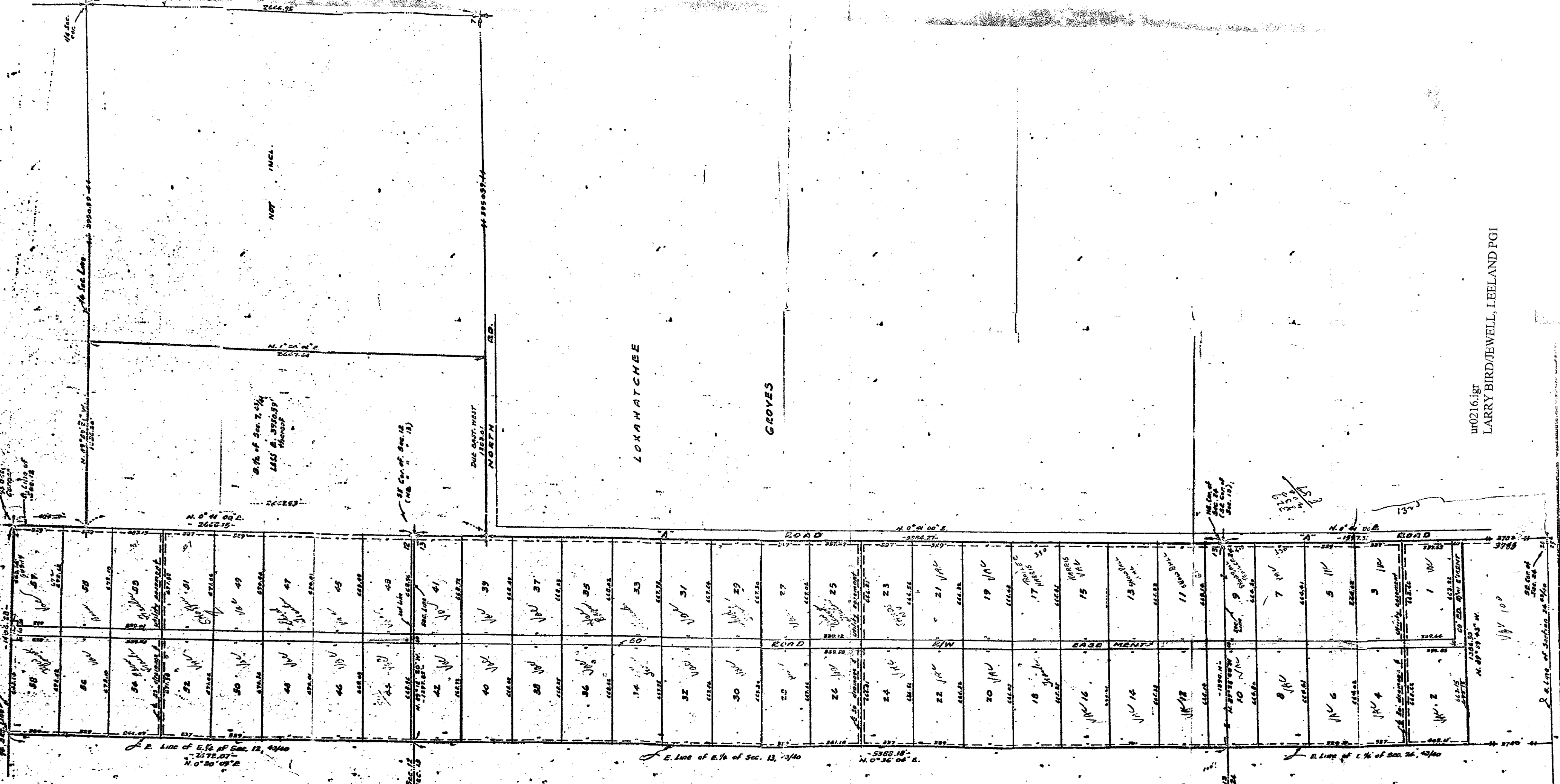


LOXAHATCHEE
CROVES

0216.igt
LARRY BIRD/JEWELL, LEELEND PCI



JOHN R. DAVIS & ASSOCIATES, INC.
REGISTERED ENGINEERS & LAND SURVEYORS
WEST PALM BEACH, FLA. LAKE WORTH, FLA.

PLAT OF SURVEY, Showing Proposed Land Division - of
the East 1/4 of Section 26, less the South 3783 feet thereof, AND the East
1/4 of Section 13, AND the East 1/4 of the South 1/2 of Section 12, Township 23
South, Range 40 East, AND the South 1/2 of Section 7, Township 23 South,
Range 40 East, LESS the East 2830.55 feet, in Palm Beach County, Florida.

Approved by *John R. Davis*
Exp. Land Surveyor
No. Cert. No. 1275

200
Dated: March 2, 1971
LEELAN C. JEWELL
Ordered by: Bird and Estate Co.
1000 V&A PARKWAY - FD-1-23